

LIVEWORK TACOMA



Increase your bottom line with DOTG's Live Close to Work Program

EMPLOYER BENEFITS

- increased employee retention
- reduced parking costs
- increased productivity
- decreased absenteeism
- lower healthcare costs

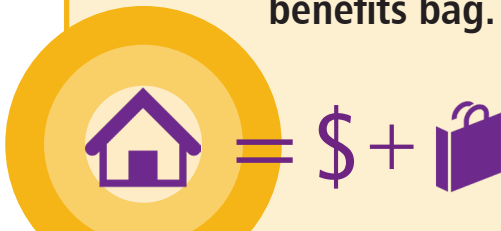
EMPLOYEE BENEFITS

- financial incentives
- discounted rentals
- home loan benefits
- discounts on local restaurants, entertainment, and more!



How it Works

When an employee moves within 1-3 miles from work, they will receive a financial incentive and a benefits bag.



How to Participate

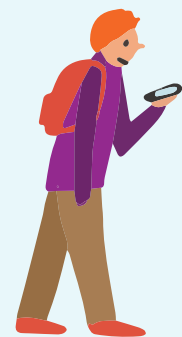
- 1 Sign up
- 2 Contribute based on number of employees
- 3 Make program information available

Get in touch!

Amber Stanley
ambers@downtownontheho.org
253-252-9223

"Participating in the Live Close to Work program was an easy decision for SiteCrafting. The resources help support a healthy work/life balance for our employees, and it provides us a great way to stay connected with the downtown Tacoma community."

Sarah Champion
Director of Operations
SiteCrafting



DOWNTOWN:
On the go!

